



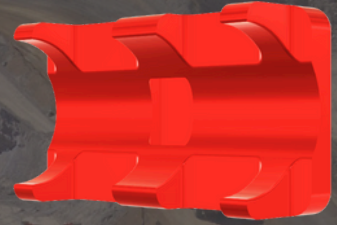
LIEBHERR

GREASE LINE INFORMATION TAGS

- Anodised Aluminium
- Laser Engraved
- Colour Coding Identification
- Chemical Resistant
- UV Resistant
- Secure with a 316 Stainless Steel Cable Tie
- Compatible with -4 & -6 Grease Lines
- Compatible with OEM & Aftermarket Hoses
- Machine Kits Available



(24m)
Bucket cyl
Rod Middle
1 x LM5
18mm 2cc



OUR INNOVATION. YOUR ADVANTAGE.



Eliminate Time Spent on Grease Audits



(24a-24i)
Bucket cyl Rod
Pin Cap
1 x LM5
9mm 5cc



Simplifying Grease Audits



(20m)
Shift Lever
Middle
1 x LM5
18mm 2cc



Engineered For Life



(17m)
Stick-Bucket
Middle
Linked Injector
12mm 8cc



(14a)
Boom cyl Top
Pin Cap
1 x LM5
20mm 1.3cc



0427 214 127



support@xlrmmechanical.com



xlrmmechanical.com



Eliminate Grease Lines Being
Incorrectly Installed



Compatible with
-4 & -6 Hoses

Custom Engraving
Available

ID Tags Match
Pre-Set Injector Cap Colours



Kit Contents:

Machine Specific Tags
Stainless Steel Cable Ties
Cable Tie Tensioning Tool
Transport Case

316 Stainless Steel Cable Tie



0427 214 127



support@xlrmechanical.com



xlrmechanical.com