



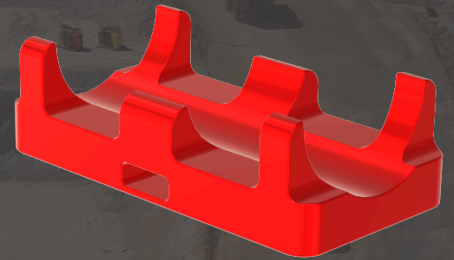
# LIEBHERR

## GREASE LINE INFORMATION TAGS

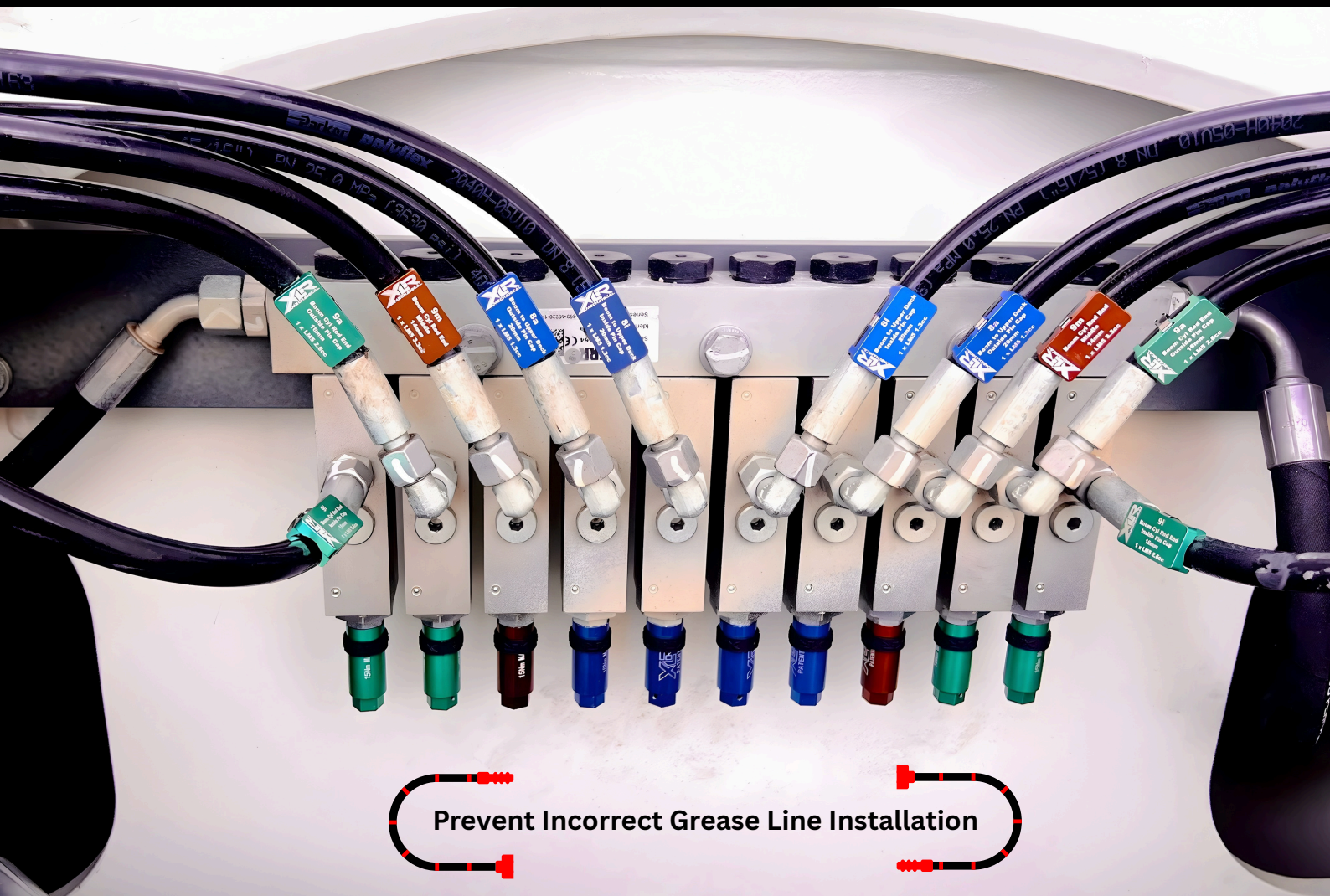
- Anodised Aluminium
- Laser Engraved
- Colour Coded Identification
- Chemical Resistant
- UV Resistant
- Compatible with -4 -5 & -6 Grease Lines
- Fastened with a 316 Stainless Steel Cable Tie
- Compatible with OEM & Aftermarket Hoses
- Machine Kits Available



**14a**  
Boom Cyl Barrel End  
Outside Pin Cap  
18mm  
1 x LM5 2cc



**OUR INNOVATION. YOUR ADVANTAGE.**



Prevent Incorrect Grease Line Installation



0427 214 127



[support@xlrmecanical.com](mailto:support@xlrmecanical.com)



[xlrmecanical.com](http://xlrmecanical.com)



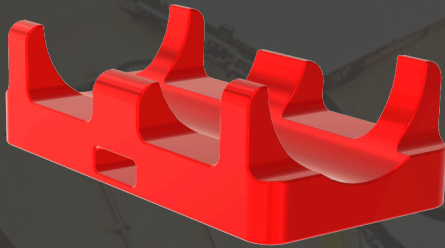
# Component Features

Anodised Aluminium



Custom Engraving Available

ID Tags Match Pre-Set Injector  
Cap Colours



Compatible with -4 -5 -6 Hoses



Fastened with a 316  
Stainless Steel Cable Tie

## Kits

### OUR RANGE

- R9150
- R9200
- R9250
- R9300
- R9400
- R996
- R9600
- R9800



### Kit Contents:

Machine Specific Tags  
Stainless Steel Cable Ties  
Cable Tie Tensioning Tool  
Transport Case

